



QUALITY FIBRE +
QUALITY PEOPLE =
QUALITY PRODUCTS

PRODUCT OF CHOICE WORLDWIDE

Skeena Sawmills specializes in Pacific Coast Hemlock, an excellent choice for industrial use, joinery and general construction. The wood is strong and attractive with a straight uniform grain and fine texture. It is free of resin and odorless when dry. Slow-growing Pacific Coast Hemlock makes up more than 85% of our harvest area in Northwestern British Columbia. It is often sold together with Amabilis Fir under the name Hem-Fir. Skeena Sawmills manufactures quality Pacific Coast Hemlock products in the sizes, lengths and grades needed to meet customer requirements.

Pacific Coast Hemlock has unique characteristics that make it popular with users worldwide:

- Strong and lightweight, it is ideal for many general construction and finishing applications.
- It has good working properties, is easy to machine and sands smoothly.
- It holds nails and screws firmly, and has good gluing characteristics.
- It takes both stains and paints well.
- It is very easy to treat, making it a preferred species for treated wood applications where density and high strength are important.

CHOOSE SKEENA PRODUCTS FOR

- High-quality fibre
- Multiple applications
- Superior appearance
- Fine, even grain
- Excellent presentation
- Renewable product

KEY ATTRIBUTES OF PACIFIC COAST HEMLOCK



MACHINING



GLUING



SANDING



NAIL HOLDING



SCREW HOLDING



FINISHING



STRENGTH



APPEARANCE



TREATMENT

Wood is the ideal green building material. It is renewable and recyclable, and has a lighter carbon footprint than other construction materials. Skeena Sawmills manages forests sustainably and makes the best use of all the fibre we harvest.

MULTIPLE APPLICATIONS OF PACIFIC COAST HEMLOCK



FURNITURE
(Appearance)



FURNITURE
(Strength)



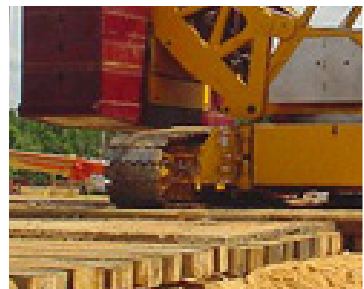
**WINDOWS
AND JOINERY**



**OUTDOOR
LANDSCAPING**



FRAMING



RIG-MATS



PACKAGING



**CONCRETE
FRAMING**

SKEENA SAWMILLS PRODUCT RANGE



CLEAR



DIMENSION



**GENBAN &
FURNITURE GRADE**



TIMBERS



Skeena
SAWMILLS

*Our commitment to customer satisfaction
and value is what sets us apart.*

FOR MORE INFORMATION

<http://skeenasawmills.com>

Head Office

1518 - 1030 W. Georgia Street
Vancouver, BC Canada V6E 2Y3

Tel: 1-604-800-5990
Fax: 1-604-800-5987
info@skeenasawmills.com

Sawmill

5330 Highway 16 West,
Terrace BC, V8G 0C6

1-250-635-6336

Lumber Sales

Tel: 1-604-800-5997
Fax: 1-604-800-5987

sales@skeenasawmills.com